

# WSL

## Military World Tournament

Men's "A" - Men's "B" - Men's "Intramural" - Women's

**May 8 - 11, 2014**

**Myrtle Beach, SC**

**Grand Park Athletic Complex**





*World Softball League & The Myrtle Beach Convention & Visitor's Bureau*

*Welcomes you to the*

**2014 WSL  
Military World Tournament**

**May 8-11, 2014  
Grand Park Athletic Complex  
MYRTLE BEACH, SOUTH CAROLINA**

### **TOURNAMENT INFORMATION**

**ENTRY FEE & FORMAT:** \$375.00 (Plus \$25 sanction Fee if not sanctioned) - 3 game guarantee.

**DEADLINE:** May 1, 2014

**ENTRY PROCEDURE:** Sign up online at [www.worldsoftballleague.com](http://www.worldsoftballleague.com) and pay with a credit card or fill out the entry form, include check or money order, have it in our hands no later than May 1.

**ROSTERS:** Must be online at [www.worldsoftballleague.com](http://www.worldsoftballleague.com) prior to the May 1st entry deadline.

**GAME TIMES:** Brackets will be available online, Tuesday, May 6th after 5:00pm. Brackets will not be mailed, faxed, or emailed out. Official bracket will be at Grand Park Athletic Complex. All teams must be available to play by 9:00am Friday morning, May 9th.

**MANAGER'S MEETING:** Breaker's Resort in Papa's Private Room—Thursday, May 8th at 7:30pm

**OPENING CEREMONIES:** Friday, May 9th—Time TBA!

**TRAVEL / HOTEL / TEAM INFO SHEET:** Teams must stay at one of the host hotels/resorts to be eligible to win the prize package. Please fill out travel form and send it to: [Nathan@Worldsoftballleague.com](mailto:Nathan@Worldsoftballleague.com)

**BAT TESTING:** All bats will be tested. Maximum of 18 approved bats per team. Approved bats will be stickered w/ a serial number. Testing begins at 2:00pm Thursday, at Breaker's Resort in Papa's Private Room, Testing will run until 7:00pm. We will resume testing bats at Grand Park Athletic Complex on Friday morning at 7:00am and run through out the day. We will also do random testing throughout the weekend. Please refer to the WSL rule book for approved bat standards.

**CONDITIONS:** The tournament director reserves the right to change formats, dates, times, location, etc to complete the event due to inclement weather or anything beyond our control.

**UNIFORMS:** Similar shirts w/ unique numbers on the back. If caps are worn, must be a like. No pro-testing of uniforms will be allowed.

**BALLS:** Balls will be provided by WSL, it is the teams responsibility to help retrieve foul / home run balls.

**ID / ROSTER CHECK IN:** Team manager's must check in with Roster and all appropriate ID's. Check in at Breaker's Resort in Papa's Private Room—Thursday, May 8th from 2:00pm til 7:00pm.

**MERCY RULE:** 20 after 3, 15 after 4, 12 after 5

**PITCHING:** Option #2 pitching, 4' - 10' w/ faking.

**HOME RUN RULES:** Men's "A" 12, Men's "B" 6, Men's "Intramural" 3, Women's unlimited.

**TOURNAMENT HEADQUARTERS:**

GRAND PARK ATHLETIC COMPLEX  
Farrow Pkwy, Myrtle Beach, SC, 29577

**ADMISSION POLICY:** NO GATE FEE, Included with tournament entry fee.



Welcome  
To The Next Level



## MILITARY PROGRAM

### All players must have a Department of Defense Identification Card

A bona fide Men's Military team consists of Active Duty, Active Duty dependents, Reserves, ROTC, National Guard, Retired Military personnel and Department of Defense civilians. All players must have a Department of Defense Identification card.

A bona fide Women's Military team consists of Active Duty, Reserves, ROTC, National Guard, and Military dependents 18 years or older and Department of Defense civilians. All players must have a government identification card.

Retired Military personnel and retired Department of Defense civilians are eligible to play with a team from the state where they retired or a team from the state of their permanent address. Contractors who have a DOD ID card or a common access card (CAC) are eligible to participate.

For teams participating in the Military World Tournament, players may participate in only one division of play, Men's "A" or "B" or Intramural. TDY personnel are eligible to compete in the World Tournament if the TDY assignment is 6 months or more in duration.

#### Player Eligibility

1. Men's "A" players must provide a valid CAC or DOD card to participate in this program.

a. Male players whose names appear on the WSL Restricted Player List are not eligible to compete in the Men's "A" Program as a contractor. If you appear on the WSL RPL list and are active military, you may play the "A" level only and an "A" team may only have 1 WSL RPL player.

b. Men's "A" rosters are limited to two contractors who must provide a DoD Common Access Card which contains a green color bar or one player who possesses a DD214 with an Honorable Discharge.

2. Men's "B" rosters must provide the following documents:

a. Active Duty reservists must provide a copy of PCS orders with Military ID at registration, which places them at current military installation or command.

b. All other eligible players including retirees, DOD contractors " which must provide DoD Common Access Card with green color bar and dependents must show proof of ID and residency from the state/local region they are playing in to prove eligibility.

Men's "B" teams are limited to three (3) contractors.

c. Men's teams that cannot provide player eligibility documents will be moved to the "A" program.

d. EXCEPTION: Any player receiving PCS orders within 45 days of the WSL Military World Tournament can request an exception from the WSL National Military Program Director:

CAC = Common Access Card  
DOD = Department of Defense  
PCS = Permanent Change Order  
TDY = Temporary Duty

3. Men's Intramural rosters must provide the following documents:

a. Active Duty reservists must provide a copy of PCS orders with Military ID at registration, which places them at current military installation or command.

b. All other eligible players including retirees, DOD contractors " which must provide DoD Common Access Card with green color bar and dependents must show proof of ID and residency from the state/local region they are playing in to prove eligibility.

c. Men's teams that cannot provide player eligibility documents will be moved to Men's "A" program.

d. EXCEPTION: Any player receiving PCS orders within 45 days of the WSL Military World Tournament can request an exception from the WSL National Military Program Director:

CAC = Common Access Card  
DOD = Department of Defense  
PCS = Permanent Change Order  
TDY = Temporary Duty

A Intramural team is composed of eligible players, all assigned to the same installation, base, post, or ship which are able to participate in this installation's Intramural program. All players assigned to one of the following levels of command:

Air Force/Squadron or lower  
Army/Company or lower  
Navy/Command, Squadron or Unit of 1,000 or less  
Marine Corps/Division or lower  
Coast Guard/Group of 1,000 or less

4. Women's Military rosters must provide the following documents:

a. Active Duty reservists must provide a copy of PCS orders with Military ID at registration, which places them at current military installation or command.

b. All other eligible players including retirees, Reserves, ROTC, National Guard, and DOD contractors " which must provide DoD Common Access Card with green color bar " and dependents must show proof of ID and residency from the state/local region they are playing in to prove eligibility.

c. Women's Varsity teams may combine with one other team from the same state or a base from an adjoining state ( with the approval of the WSL National Military Program Director ). The players from the resulting team can be from only two installations without the approval of the WSL National Military Program Director.

d. Women's teams with the approval of the WSL Military National Director may have three players from US Installation other than their home base who meet one of the following criteria: 1) Active Military, 2) Military Retiree, or 3) a Veteran with a DD214 with an Honorable Discharge.

e. EXCEPTION: Any player receiving PCS orders within 45 days of the WSL Military World Tournament can request an exception from the WSL National Military Program Director:

CAC = Common Access Card  
DOD = Department of Defense  
PCS = Permanent Change Order  
TDY = Temporary Duty

# 2014 WSL Military World Tournament

## TEAM TRAVEL/INFORMATION SHEET

(It is important that the following information is filled out completely. This is how we contact your team if there are any changes or updates to the tournament)

**TEAM NAME:** \_\_\_\_\_

**TEAM LOCATION (City):** \_\_\_\_\_ **State:** \_\_\_\_\_

**MANAGER:** \_\_\_\_\_

**ADDRESS:** \_\_\_\_\_

**CITY:** \_\_\_\_\_ **State:** \_\_\_\_\_ **Zip:** \_\_\_\_\_

**HOTEL/CONDO:** \_\_\_\_\_

**NUMBER OF ROOMS BOOKED:** \_\_\_\_\_ **NIGHTS:** \_\_\_\_\_

**NUMBER OF PEOPLE IN YOUR GROUP:** \_\_\_\_\_

**NAME ROOMS RESERVED UNDER:** \_\_\_\_\_

**METHOD OF TRAVEL:** \_\_\_\_\_

**MILEAGE OF TRAVEL:** \_\_\_\_\_

**ARRIVAL DATE:** \_\_\_\_\_

**Please Forward this info to:**  
**Nathan@WorldSoftballleague.com**

**Or Mail To:**

**World Softball League**  
**911 NE Macedonia Church Road**  
**Lee, FL 32059**



## WSL SLOW PITCH SOFTBALL ENTRY FORM 2014 Military World Tournament

Circle appropriate Tournament

Men's "A"    Men's "B"    Men's "Intramural"    Women's

Name of Team: \_\_\_\_\_

From (City & State) \_\_\_\_\_

Manager's Name: \_\_\_\_\_ Cell Phone: \_\_\_\_\_

Manager's Complete Mailing Address: \_\_\_\_\_

(Zip): \_\_\_\_\_

Team Sponsored By: \_\_\_\_\_

### CODE OF UNDERSTANDING

1. This entry form, along with entry fee, must be submitted to WSL Office or you may choose to enter online.
2. The World Tournament Director is under no obligation to accept an entry fee that arrived after the bracket is drawn.
3. All teams must be completely uniformed by WSL By-laws when competing in a World Tournament.
4. Any team that submits a bad check for payment of entry fee or motel/condo bills will be subject to disbarment.
5. Any team destroying property or involved in theft of motel/condo property will be subject to disbarment.
6. My team stands read to play on Friday morning if so scheduled.

I agree with the above "code of understanding".

### RELEASE

I, the undersigned, manager of the team shown on this entry form hereby state that the team represented by its roster, is a voluntary participant in this tournament which is sanctioned by the World Softball League (WSL). In consideration of this acceptance of our application in said tournament we do hereby release and forever discharge WSL of and from all liabilities, claims, actions, and possible causes of action whatsoever that may accrue to us or to our heirs from every and any loss and injury including death that may be sustained by our person or property while, in about, or route into and away from said tournament. AND WHEREAS, the undersigned is aware of the dangerous nature of our undertaking as it relates to loss of life and/or limb, therefore, it is agreed as follows: That in consideration of being allowed to participate in said tournament, the undersigned team through its manager hereby voluntarily assumes all risks from accident or damage to person or property hereby releases WSL from every claim, liability, or demand of any kind for an account of any personal injury or damage of any kind sustained or caused by the negligence of the WSL, its sponsors or otherwise.

I have read and understand the foregoing release and code of understanding.

Signature: \_\_\_\_\_ Date: \_\_\_\_\_



# 2014 WSL MILITARY WORLD TOURNAMENT AWARD PACKAGE

## Men's "A"

1st Place: MILITARY CUP TRAVEL TROPHY, World Championship Trophy, 12 Custom Rings, 2 Worth Bats, 15 Pullovers, 15 Dry Fits, 4 All World Selections, 1 MVP Award

2nd Place: Team Trophy, 2 Worth Bats, 15 Dry Fits, 15 Batting Gloves, 3 All World Selections, 1 ODP

3rd Place: Team Trophy, 1 Worth Bat, 15 Dry Fits, 15 WSL Hats, 2 All World Selections

4th Place: 1 Worth Bat, 15 WSL Hats, 1 All World Selection

## Men's "B"

1st Place: MILITARY CUP TRAVEL TROPHY, World Championship Trophy, 12 Custom Rings, 2 Worth Bats, 15 Pullovers, 15 Dry Fits, 4 All World Selections, 1 MVP Award

2nd Place: Team Trophy, 2 Worth Bats, 15 Dry Fits, 15 Batting Gloves, 3 All World Selections, 1 ODP

3rd Place: Team Trophy, 1 Worth Bat, 15 Dry Fits, 15 WSL Hats, 2 All World Selections

4th Place: 1 Worth Bat, 15 WSL Hats, 1 All World Selection

## Men's "Intramural"

1st Place: MILITARY CUP TRAVEL TROPHY, World Championship Trophy, 12 Custom Rings, 2 Worth Bats, 15 Pullovers, 15 Dry Fits, 4 All World Selections, 1 MVP Award

2nd Place: Team Trophy, 2 Worth Bats, 15 Dry Fits, 15 Batting Gloves, 3 All World Selections, 1 ODP

3rd Place: Team Trophy, 1 Worth Bat, 15 Dry Fits, 15 WSL Hats, 2 All World Selections

4th Place: 1 Worth Bat, 15 WSL Hats, 1 All World Selection

## Women's

1st Place: MILITARY CUP TRAVEL TROPHY, World Championship Trophy, 12 Custom Rings, 2 Worth Bats, 15 Pullovers, 15 Dry Fits, 4 All World Selections, 1 MVP Award

2nd Place: Team Trophy, 2 Worth Bats, 15 Dry Fits, 15 Batting Gloves, 3 All World Selections, 1 ODP

3rd Place: Team Trophy, 1 Worth Bat, 15 Dry Fits, 15 WSL Hats, 2 All World Selections

4th Place: 1 Worth Bat, 15 WSL Hats, 1 All World Selection

ALL AWARDS BASED ON 20 TEAMS PER CLASS or 80 Total teams!

**OVER A \$26,000.00 Retail—Prize Package!**

## **CROWN REEF**

2913 S. Ocean Blvd.  
Myrtle Beach, SC 29577  
<http://www.crownreef.com/>  
**843-626-8077**



**USE WSL PROMO CODE: WSL**

**Or Call Woody with Vacation Myrtle Beach at 834-626-8077 ext. 3042**

**Ocean Front Deluxe Queen: 2 Queen Beds & a small Fridge. RATE: \$76.00**

**Ocean Front Queen Efficiency: 2 queen Beds & a Full Kitchen. RATE: \$83.00**

**Ocean Front King Efficiency: 1 King Bed, 1 Sleeper Sofa, & a Full Kitchen. RATE: \$83.00**

**Ocean Front Queen Deluxe Suite: 2 Queen Beds, 1 Murphy Bed, 1 Sleeper Sofa, 2 TV's, & a Full Kitchen. RATE: \$88.00**

**Now Under a Multi Million Dollar Renovation—Will be complete before May!  
ONLY 2 MILES TO GRAND ATHLETIC COMPLEX!**

**13% Tax Plus Resort Fee!**





# LANDMARK RESORT

1501 S. Ocean Blvd.  
Myrtle Beach, SC 29577  
<http://www.landmarkresort.com/>  
**888-425-5282**



**USE WSL PROMO CODE: WSL**

**Or Call Woody with Vacation Myrtle Beach at 834-626-8077 ext. 3042**

**Interior View: 2 Double Beds, granite counter top wet bar, microwave, refrigerator, private balcony. RATE: \$60.00**

**Ocean View: 2 Double Beds, granite counter top wet bar, microwave, refrigerator, private balcony. RATE: \$79.00**

**Ocean Front Executive Suite: 2 Double Beds, 1 Double Wall Bed, & a Full Kitchen. RATE: \$105.00**

**Only 3.4 Miles To Grand Athletic Complex!**

**17 Water Features, free 9 hole mini golf, Latitudes Bar & Grill, Gazebo Restaurant, Free Internet, 8 Story Free Parking Garage & Starbucks Coffee!**

13% Tax plus Resort Fee



# **SEA MIST OCEANFRONT RESORT**

1200 S. Ocean Blvd.  
Myrtle Beach, SC 29577  
<http://www.seamist.com/>

**800-200-8687**

**USE WSL PROMO CODE: JWSL**

**Contact: Jean Shadron  
LeAnne McCulloch  
Amy Skipper  
Contact between 7:30am—5:00pm**

Sandcastle: Double Bedroom—**Ocean Front**, One room unit w/ 2 Double Beds & Balcony. Units are equipped with microwave & Refrigerator. RATE: \$66.00

Sandcastle: Studio—Ocean View, one room unit, 2 Double Beds & Balcony. Units are equipped with a Kitchenette. RATE: \$62.00

Sandcastle: Double Bedroom—Ocean View, One room unit w/ 2 Double Beds & Balcony. Units are equipped with microwave & Refrigerator. RATE: \$62.00

Palms: Family Suite—A two room, one bath suite w/ balcony overlooking the Sea Mist Water Park. One room is a bedroom with 2 Double Beds. The Second room is a living room/kitchenette combination with a pull down wall bed. RATE: \$83.00



# **BREAKERS RESORT**

2006 N. Ocean Blvd.

Myrtle Beach, SC 29577

<http://breakers.com>

USE WSL PROMO CODE: World Softball League

**1-888-428-1486**

## **PALMETTO TOWER**

Standard Room: \$89.00

Ocean View Double: \$99.00

Ocean Front Double: \$109.00

## **PALMS TOWER**

Ocean Front Suite: \$129.00

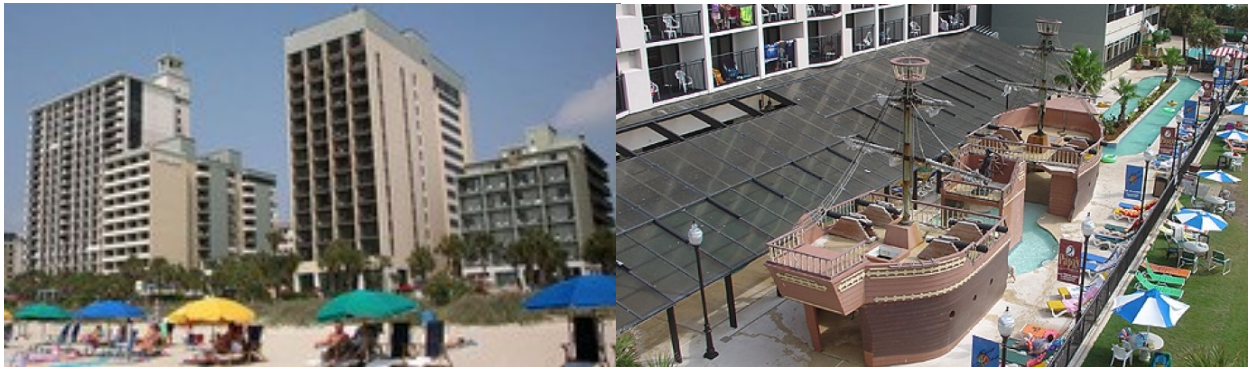
Ocean View Suite: \$119.00

## **PARADISE TOWER**

1 Bedroom Ocean Front Condo: \$135.00

All rooms are subject to 13% tax & \$10.00 per night resort service fee.

Our Resort offers amenities such as Indoor/Outdoor Pools, Lazy River, Fitness Rooms, Complimentary High Speed Internet Access, Papas restaurant, Starbucks Coffee shop, The Red Parrot Bar and grill, 24 hour security and complimentary indoor parking





# DAYTON HOUSE RESORT

2400 N Ocean Blvd  
Myrtle Beach, SC 29577

**877-605-3359**



Book Online: <http://search.igrez.com/reservations/DaytonHouse/search/15581>

## USE WSL PROMO CODE: World Softball Tournament

**Ocean Front Suite: 2 Double Beds, full Kitchen, table w/ 4 chairs, flat panel TV, double wall bed, oceanfront balcony. RATE: \$109.00**

**Ocean Front Efficiency: 2 Queen Beds, efficiency kitchen, table w/ 4 chairs, flat panel TV, & private balcony. RATE: \$89.00**

**Side View Efficiency: 2 Queen Beds, efficiency kitchen, table w/ 4 chairs, flat panel TV, & private balcony. RATE: \$79.00**

**Side View Efficiency: 2 Queen Beds, efficiency kitchen, table w/ 4 chairs, flat panel TV, & private balcony. RATE: \$74.00**

All rooms are subject to 13% tax NO RESORT FEE!

