

WSL

SPRING NATIONALS

Men's C - Men's D - Men's E - Women's

Mother's Day Bash on the Beach

May 8 - 11, 2014

Myrtle Beach, SC

Grand Park Athletic Complex





World Softball League & The Myrtle Beach Convention & Visitor's Bureau

Welcomes you to the

**2014 WSL
Spring Nationals**

**May 8-11, 2014
Grand Park Athletic Complex
MYRTLE BEACH, SOUTH CAROLINA**

TOURNAMENT INFORMATION

ENTRY FEE & FORMAT: \$400.00 (Add \$25 sanction Fee if not sanctioned) - 3 game guarantee.

DEADLINE: May 5, 2014

ENTRY PROCEDURE: Sign up online at www.worldsoftballleague.com and pay with a credit card or fill out the entry form, include check or money order, have it in our hands no later than May 5.

ROSTERS: Must be online at www.worldsoftballleague.com prior to the May 5th entry deadline.

GAME TIMES: Brackets will be available online, Tuesday, May 6th after 5:00pm. Brackets will not be mailed, faxed, or emailed out. Official bracket will be at Grand Park Athletic Complex. All teams must be available to play by 1:00pm Friday afternoon, May 9th.

MANAGER'S MEETING: Breaker's Resort in Papa's Private Room—Thursday, May 8th at 7:30pm

TRAVEL / TEAM INFO SHEET: Please fill out travel and team info form and send it to:
Nathan@Worldsoftballleague.com or Bill@Worldsoftballleague.com

BAT TESTING: All bats will be tested. Maximum of 18 approved bats per team. Approved bats will be stickered w/ a serial number. Testing begins at 2:00pm Thursday, Breaker's Resort in Papa's Private Room, Testing will run until 7:00pm. We will resume testing bats at Grand Park Athletic Complex on Friday morning at 9:00am and run through out the day. We will also do random testing throughout the weekend. Please refer to the WSL rule book for approved bat standards.

CONDITIONS: The tournament director reserves the right to change formats, dates, times, location, etc to complete the event due to inclement weather or anything beyond our control.

UNIFORMS: Similar shirts w/ unique numbers on the back. If caps are worn, must be a like. No protesting of uniforms will be allowed.

BALLS: Hit Your own WSL Stamped World Gold Dots 44/400!

PITCHING: WSL Option #2 Pitching, 4' - 10' w/ faking.

PHOTO ID: All players must have a valid government issued photo ID. Failure to produce ID could result in your teams dismissal from the event.

MERCY RULE: 20 after 3, 15 after 4, 12 after 5

LODGING: See hotel page with in this packet. Must stay at one of these host resorts/hotels to be eligible for prize package!

TOURNAMENT HEADQUARTERS:

GRAND PARK ATHLETIC COMPLEX
Farrow Pkwy, Myrtle Beach, SC, 29577

ADMISSION POLICY: NO GATE FEE, ALL INCLUDED WITH TOURAMENT ENTRY FEE!



Welcome
To The Next Level



2014 WSL Spring National Tournament

TEAM TRAVEL/INFORMATION SHEET

(It is important that the following information is filled out completely. This is how we contact your team if there are any changes or updates to the tournament)

TEAM NAME: _____

TEAM LOCATION (City): _____ **State:** _____

MANAGER: _____

ADDRESS: _____

CITY: _____ **State:** _____ **Zip:** _____

HOTEL/CONDO: _____

NUMBER OF ROOMS BOOKED: _____ **NIGHTS:** _____

NUMBER OF PEOPLE IN YOUR GROUP: _____

NAME ROOMS RESERVED UNDER: _____

METHOD OF TRAVEL: _____

MILEAGE OF TRAVEL: _____

ARRIVAL DATE: _____

Please Forward this info to:
Nathan@WorldSoftballleague.com

Or Mail To:

World Softball League
911 NE Macedonia Church Road
Lee, FL 32059



WSL SLOW PITCH SOFTBALL ENTRY FORM 2014 Spring National Tournament

Circle appropriate Tournament

	Men's C	Men's "D"	Men's "E"	Womens
Name of Team:	_____			
From (City & State)	_____			
Manager's Name:	_____		Cell Phone:	_____
Manager's Complete Mailing Address:	_____			(Zip): _____
Team Sponsored By:	_____			

CODE OF UNDERSTANDING

1. This entry form, along with entry fee, must be submitted to WSL Office or you may choose to enter online.
2. The World Tournament Director is under no obligation to accept an entry fee that arrived after the bracket is drawn.
3. All teams must be completely uniformed by WSL By-laws when competing in a National Tournament.
4. Any team that submits a bad check for payment of entry fee or motel/condo bills will be subject to disbarment.
5. Any team destroying property or involved in theft of motel/condo property will be subject to disbarment.
6. My team stands read to play on Friday morning if so scheduled.

I agree with the above "code of understanding".

RELEASE

I, the undersigned, manager of the team shown on this entry form hereby state that the team represented by its roster, is a voluntary participant in this tournament which is sanctioned by the World Softball League (WSL). In consideration of this acceptance of our application in said tournament we do hereby release and forever discharge WSL of and from all liabilities, claims, actions, and possible causes of action whatsoever that may accrue to us or to our heirs from every and any loss and injury including death that may be sustained by our person or property while, in about, or route into and away from said tournament. AND WHEREAS, the undersigned is aware of the dangerous nature of our undertaking as it relates to loss of life and/or limb, therefore, it is agreed as follows: That in consideration of being allowed to participate in said tournament, the undersigned team through its manager hereby voluntarily assumes all risks from accident or damage to person or property hereby releases WSL from every claim, liability, or demand of any kind for an account of any personal injury or damage of any kind sustained or caused by the negligence of the WSL, its sponsors or otherwise.

I have read and understand the foregoing release and code of understanding.

Signature: _____ Date: _____

2014 WSL SPRING NATIONAL TOURNAMENT AWARD PACKAGE

Men's "C"

1st Place: National Championship Trophy, 4 Worth Bats, 15 Pullovers, 15 Dry Fits, 15 Hats, 4 All Tournament Selections, 1 MVP Award, & a PAID BERTH to WS L World's in Panama City Beach, FL

2nd Place: Team Trophy, 2 Worth Bats, 15 Dry Fits, 15 Batting Gloves, 3 All Tournament Selections, 1 ODP Award

3rd Place: Team Trophy, 1 Worth Bat, 15 Dry Fits, 15 WSL Hats, 2 All Tournament Selections

4th Place: 1 Worth Bat, 15 WSL Hats, 1 All Tournament Selection

Men's "D"

1st Place: National Championship Trophy, 4 Worth Bats, 15 Pullovers, 15 Dry Fits, 15 Hats, 4 All Tournament Selections, 1 MVP Award, & a PAID BERTH to WS L World's in Panama City Beach, FL

2nd Place: Team Trophy, 2 Worth Bats, 15 Dry Fits, 15 Batting Gloves, 3 All Tournament Selections, 1 ODP Award

3rd Place: Team Trophy, 1 Worth Bat, 15 Dry Fits, 15 WSL Hats, 2 All Tournament Selections

4th Place: 1 Worth Bat, 15 WSL Hats, 1 All Tournament Selection

Men's "E"

1st Place: National Championship Trophy, 4 Worth Bats, 15 Pullovers, 15 Dry Fits, 15 Hats, 4 All Tournament Selections, 1 MVP Award, & a PAID BERTH to WS L World's in Panama City Beach, FL

2nd Place: Team Trophy, 2 Worth Bats, 15 Dry Fits, 15 Batting Gloves, 3 All Tournament Selections, 1 ODP Award

3rd Place: Team Trophy, 1 Worth Bat, 15 Dry Fits, 15 WSL Hats, 2 All Tournament Selections

4th Place: 1 Worth Bat, 15 WSL Hats, 1 All Tournament Selection

Womens

1st Place: National Championship Trophy, 4 Worth Bats, 15 Pullovers, 15 Dry Fits, 15 Hats, 4 All Tournament Selections, 1 MVP Award, & a PAID BERTH to WS L World's in Panama City Beach, FL

2nd Place: Team Trophy, 2 Worth Bats, 15 Dry Fits, 15 Batting Gloves, 3 All Tournament Selections, 1 ODP Award

3rd Place: Team Trophy, 1 Worth Bat, 15 Dry Fits, 15 WSL Hats, 2 All Tournament Selections

4th Place: 1 Worth Bat, 15 WSL Hats, 1 All Tournament Selection

ALL AWARDS BASED ON 20 TEAMS PER CLASS or 80 Total teams!

\$24,000.00 Prize Package

CROWN REEF

2913 S. Ocean Blvd.
Myrtle Beach, SC 29577
<http://www.crownreef.com/>
843-626-8077



USE WSL PROMO CODE: WSL

Or Call Woody with Vacation Myrtle Beach at 834-626-8077 ext. 3042

Ocean Front Deluxe Queen: 2 Queen Beds & a small Fridge. RATE: \$76.00

Ocean Front Queen Efficiency: 2 queen Beds & a Full Kitchen. RATE: \$83.00

Ocean Front King Efficiency: 1 King Bed, 1 Sleeper Sofa, & a Full Kitchen. RATE: \$83.00

Ocean Front Queen Deluxe Suite: 2 Queen Beds, 1 Murphy Bed, 1 Sleeper Sofa, 2 TV's, & a Full Kitchen. RATE: \$88.00

**Now Under a Multi Million Dollar Renovation—Will be complete before May!
ONLY 2 MILES TO GRAND ATHLETIC COMPLEX!**

13% Tax Plus Resort Fee!



LANDMARK RESORT

1501 S. Ocean Blvd.
Myrtle Beach, SC 29577
<http://www.landmarkresort.com/>
888-425-5282



USE WSL PROMO CODE: WSL

Or Call Woody with Vacation Myrtle Beach at 834-626-8077 ext. 3042

Interior View: 2 Double Beds, granite counter top wet bar, microwave, refrigerator, private balcony. RATE: \$60.00

Ocean View: 2 Double Beds, granite counter top wet bar, microwave, refrigerator, private balcony. RATE: \$79.00

Ocean Front Executive Suite: 2 Double Beds, 1 Double Wall Bed, & a Full Kitchen. RATE: \$105.00

Only 3.4 Miles To Grand Athletic Complex!

17 Water Features, free 9 hole mini golf, Latitudes Bar & Grill, Gazebo Restaurant, Free Internet, 8 Story Free Parking Garage & Starbucks Coffee!

13% Tax plus Resort Fee



SEA MIST OCEANFRONT RESORT

1200 S. Ocean Blvd.
Myrtle Beach, SC 29577
<http://www.seamist.com/>

800-200-8687

USE WSL PROMO CODE: JWSL

**Contact: Jean Shadron
LeAnne McCulloch
Amy Skipper
Contact between 7:30am—5:00pm**

Sandcastle: Double Bedroom—**Ocean Front**, One room unit w/ 2 Double Beds & Balcony. Units are equipped with microwave & Refrigerator. RATE: \$66.00

Sandcastle: Studio—Ocean View, one room unit, 2 Double Beds & Balcony. Units are equipped with a Kitchenette. RATE: \$62.00

Sandcastle: Double Bedroom—Ocean View, One room unit w/ 2 Double Beds & Balcony. Units are equipped with microwave & Refrigerator. RATE: \$62.00

Palms: Family Suite—A two room, one bath suite w/ balcony overlooking the Sea Mist Water Park. One room is a bedroom with 2 Double Beds. The Second room is a living room/kitchenette combination with a pull down wall bed. RATE: \$83.00



BREAKERS RESORT

2006 N. Ocean Blvd.

Myrtle Beach, SC 29577

<http://breakers.com>

USE WSL PROMO CODE: World Softball League

1-888-428-1486

PALMETTO TOWER

Standard Room: \$89.00

Ocean View Double: \$99.00

Ocean Front Double: \$109.00

PALMS TOWER

Ocean Front Suite: \$129.00

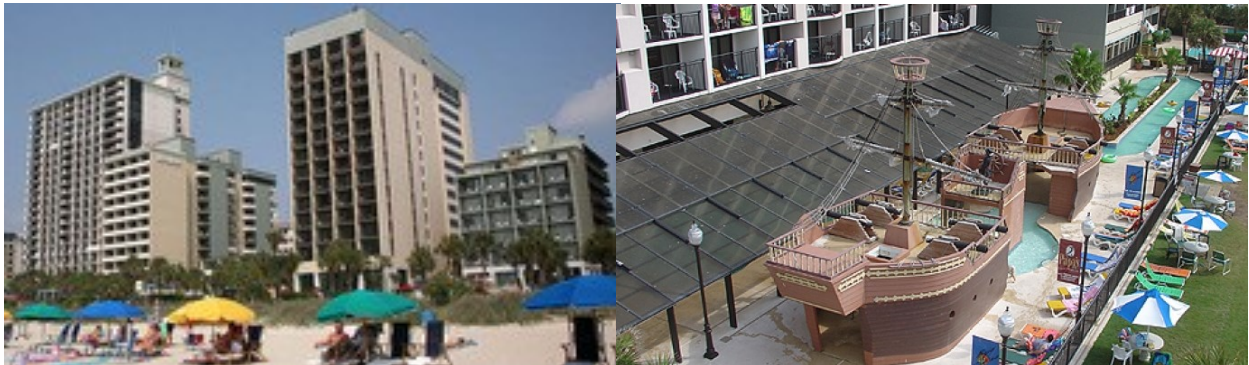
Ocean View Suite: \$119.00

PARADISE TOWER

1 Bedroom Ocean Front Condo: \$135.00

All rooms are subject to 13% tax & \$10.00 per night resort service fee.

Our Resort offers amenities such as Indoor/Outdoor Pools, Lazy River, Fitness Rooms, Complimentary High Speed Internet Access, Papas restaurant, Starbucks Coffee shop, The Red Parrot Bar and grill, 24 hour security and complimentary indoor parking



DAYTON HOUSE RESORT

2400 N Ocean Blvd
Myrtle Beach, SC 29577

877-605-3359



Book Online: <http://search.igrez.com/reservations/DaytonHouse/search/15581>

USE WSL PROMO CODE: World Softball Tournament

Ocean Front Suite: 2 Double Beds, full Kitchen, table w/ 4 chairs, flat panel TV, double wall bed, oceanfront balcony. RATE: \$109.00

Ocean Front Efficiency: 2 Queen Beds, efficiency kitchen, table w/ 4 chairs, flat panel TV, & private balcony. RATE: \$89.00

Angle View Efficiency: 2 Queen Beds, efficiency kitchen, table w/ 4 chairs, flat panel TV, & private balcony. RATE: \$79.00

West Building Efficiency: 2 Queen Beds, efficiency kitchen, table w/ 4 chairs, flat panel TV, & private balcony. Across the street from the ocean. RATE: \$74.00

All rooms are subject to 13% tax NO RESORT FEE!

